

## DESCRIPTION

AMC MODEL SWN-2184-1A OPTIONS 0318, 45-068, HPR7W, -12VDC IS A SPST REFLECTIVE PIN-DIODE SWITCH/MODULATOR OPTIMIZED FOR A FREQUENCY RANGE OF 0.3 TO 18 GHz WITH THE HIGH POWER OPTION.

## FEATURES

- 3.1 TO 3.5 GHz
- LOW LOSS
- HIGH POWER
- HIGH ISOLATION
- TTL LOGIC COMPATIBLE
- MINIATURE SIZE

## SPECIFICATIONS

- FREQUENCY RANGE ..... 0.3 TO 18 GHz
- INSERTION LOSS ..... 2.5dB MAXIMUM
- ISOLATION ..... 60dB MINIMUM
- VSWR ..... 2.0:1
- RISE TIME ..... 100ns MAXIMUM, 75ns TYPICAL
- RECOVERY TIME ..... 250ns MAXIMUM, 220ns TYPICAL
- VIDEO-TRANSIENTS .....  $\leq 2.0V$  PEAK TO PEAK, 300 MHz BANDWIDTH  
 $\leq 2.0V$  PEAK TO PEAK, 20 MHz BANDWIDTH
- RF INPUT POWER ..... 20 WATTS PEAK, 7 WATTS AVERAGE
- DC POWER (NO LOAD)
  - +V ..... +5VDC @ 100mA
  - V ..... -12VDC @ 50mA MAXIMUM
- SIZE ..... 1.0" x 1.0" x 0.5"
- WEIGHT .....  $\leq 1.0$  OZ.

## OPTIONS

- 0318 ..... 0.3 TO 18 GHz FREQUENCY RANGE
- 45-068 ..... HIGH POWER OPTION
- HPR7W ..... 10 WATT POWER OPTION
- -12VDC ..... -12VDC

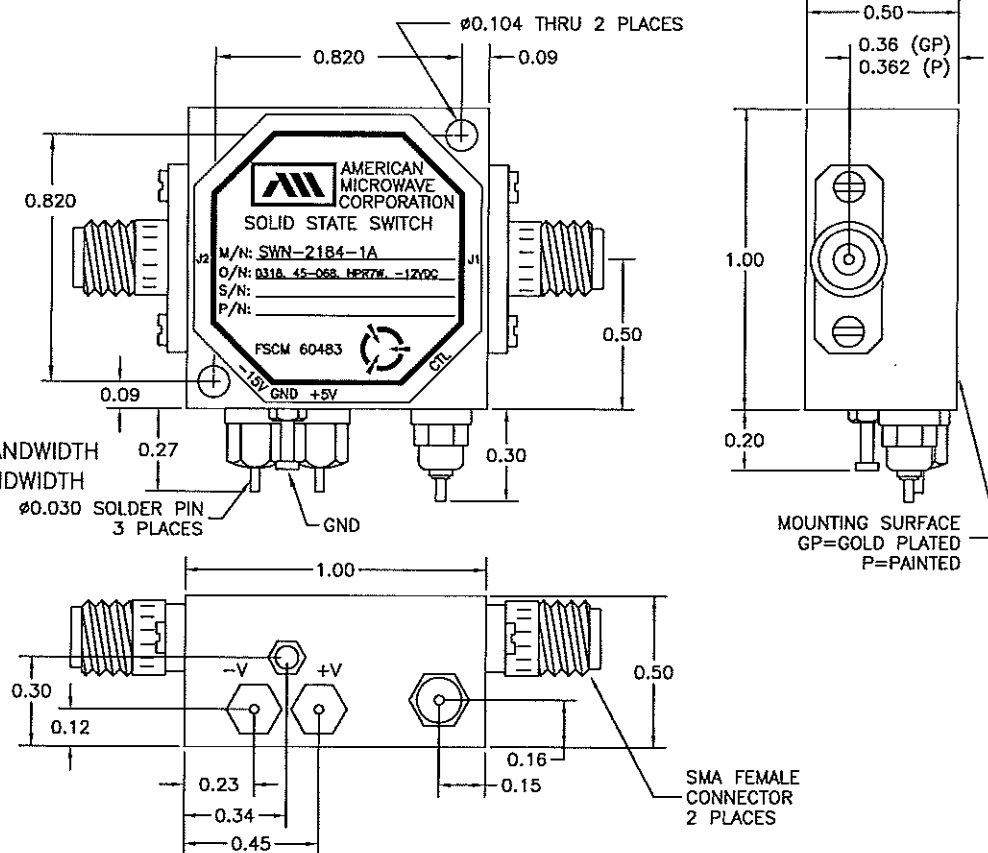
## ENVIRONMENTAL RATINGS

- TEMPERATURE ..... -55°C TO +85°C (OPERATING)  
 -65°C TO +125°C (STORAGE)
- HUMIDITY ..... MIL-STD-202F, METHOD 103B COND. B
- SHOCK ..... MIL-STD-202F, METHOD 213B COND. B
- VIBRATION ..... MIL-STD-202F, METHOD 204D COND. B
- ALTITUDE ..... MIL-STD-202F, METHOD 105C COND. B
- TEMPERATURE CYCLE ..... MIL-STD-202F, METHOD 107D COND. A

NOTE: SPECIFICATIONS WILL VARY OVER OPERATING TEMPERATURE  
 NOTE: THE ABOVE SPECIFICATIONS ARE SUBJECT TO CHANGE OR REVISION

ALL DIMENSIONS ARE IN INCHES  
 TOLERANCES:  
 X.XX  $\pm 0.020$   
 X.XXX  $\pm 0.010$

REVISIONS				
ZONE	REV.	DESCRIPTION	DATE	APPROVED
	A	SEE ECR#08-003 JOB# 712249PE	01/15/08	<i>[Signature]</i>



## AMERICAN MICROWAVE CORPORATION

7311-G GROVE ROAD  
 FREDERICK, MARYLAND 21704 USA  
 TEL: 301-662-4700 FAX: 301-662-4938  
 WEBSITE: [www.americanmicrowavecorp.com](http://www.americanmicrowavecorp.com)  
 E-MAIL: [sales@americanmicrowavecorp.com](mailto:sales@americanmicrowavecorp.com)  
 ISO 9001:2000 CERTIFIED

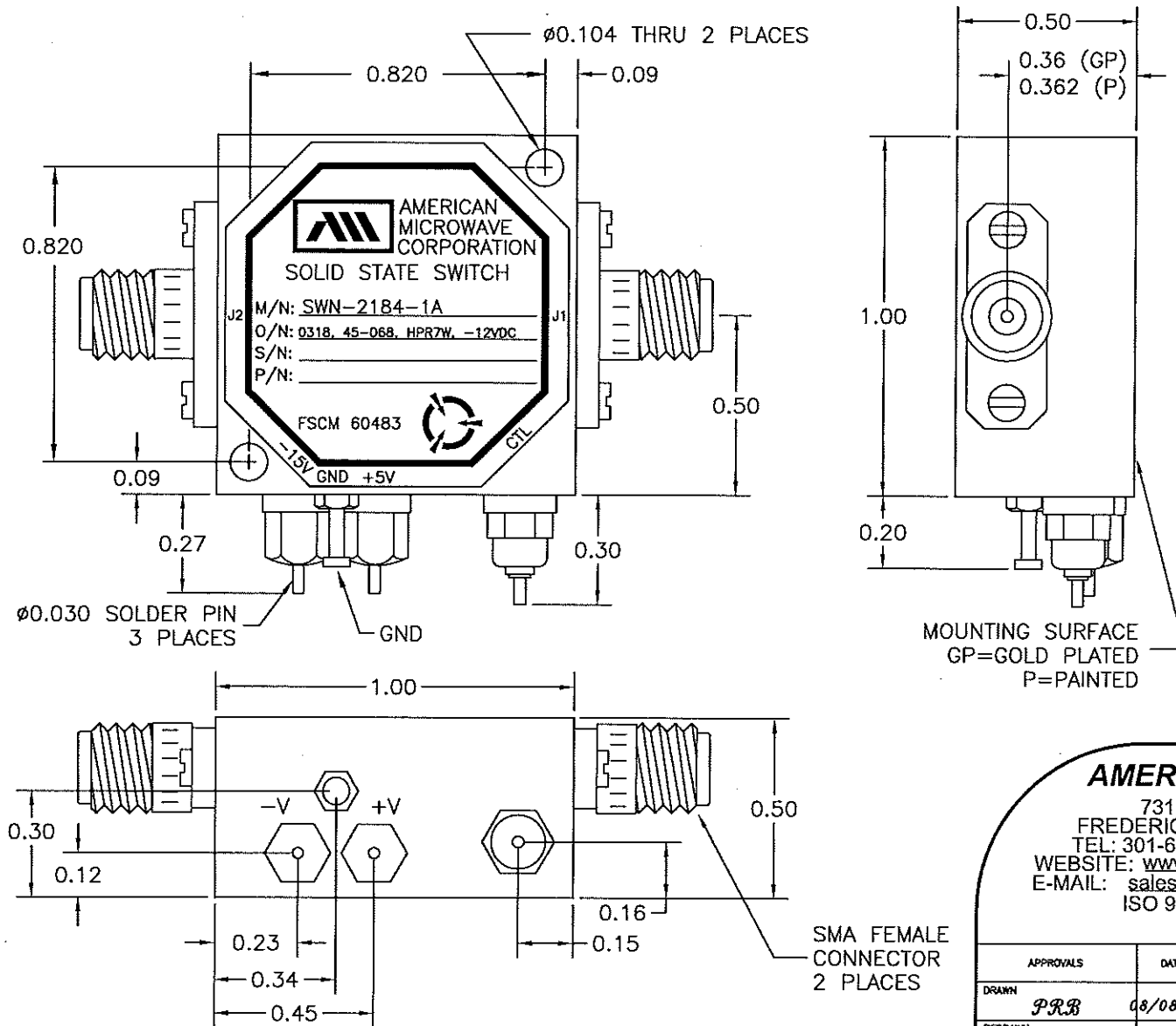


APPROVALS		DATE	TITLE			REV.
DRAWN	<i>PRB</i>	08/08/06	PRODUCT FEATURE SWN-2184-1A			
REDRAWN	<i>RA</i>	09/12/06	OPTION: 0318, 45-068, HPR7W, -12VDC 0.3 TO 18 GHz SPST REFLECTIVE PIN-DIODE SWITCH			
ISSUED			SIZE	FSCM NO.	DWG NO.	
			A	60483	100-6986-4	A
			SCALE	N:S	SHEET	1 OF 4

## DESCRIPTION

AMC MODEL SWN-2184-1A OPTIONS 0318, 45-068, HPR7W, -12VDC IS A SPST REFLECTIVE PIN-DIODE SWITCH/MODULATOR OPTIMIZED FOR A FREQUENCY RANGE OF 0.3 TO 18 GHz WITH THE HIGH POWER OPTION.

## MECHANICAL OUTLINE



ALL DIMENSIONS ARE IN INCHES  
TOLERANCES:  
X.XX ±0.020  
X.XXX ±0.010

## AMERICAN MICROWAVE CORPORATION

7311-G GROVE ROAD  
FREDERICK, MARYLAND 21704 USA  
TEL: 301-662-4700 FAX: 301-662-4938  
WEBSITE: [www.americanmicrowavecorp.com](http://www.americanmicrowavecorp.com)  
E-MAIL: [sales@americanmicrowavecorp.com](mailto:sales@americanmicrowavecorp.com)  
ISO 9001:2000 CERTIFIED

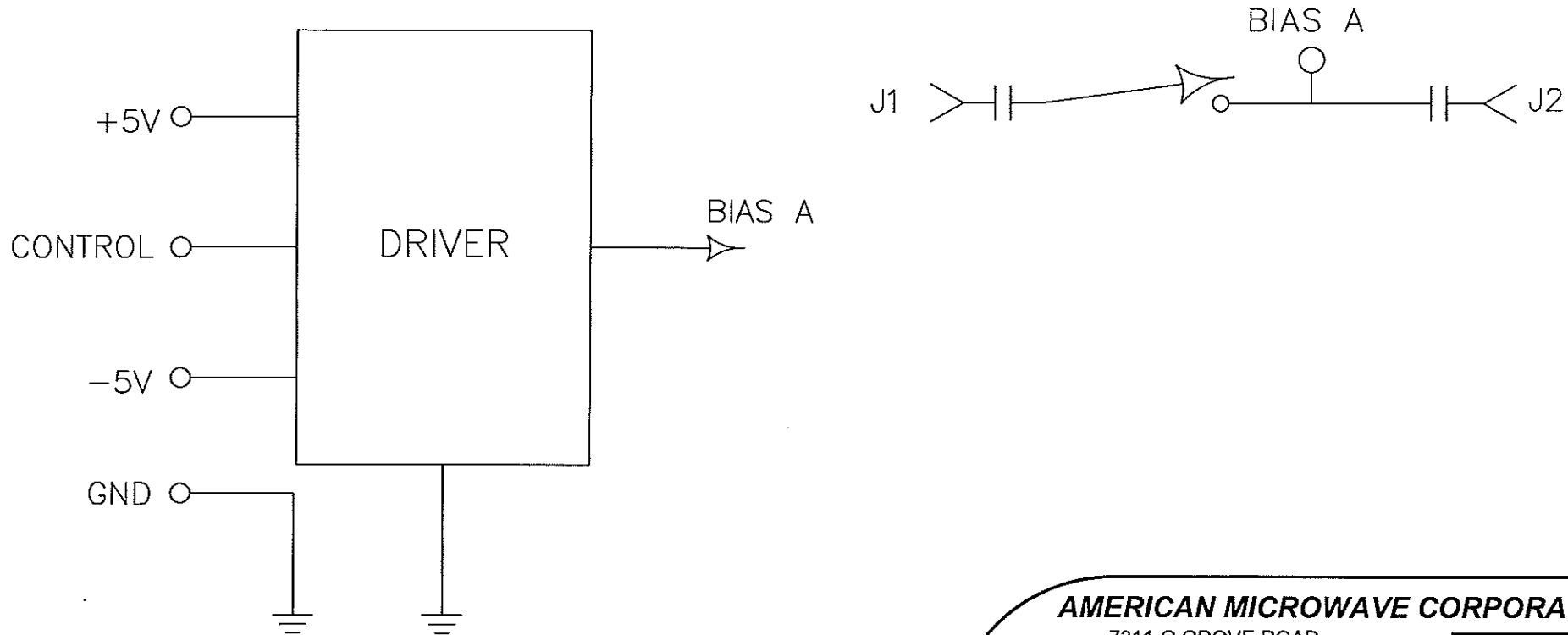


APPROVALS		DATE	TITLE		
DRAWN	<i>PRB</i>	08/08/06	PRODUCT FEATURE SWN-2184-1A		
REDRAWN	<i>RA</i>	09/12/06	OPTION: 0318, 45-068, HPR7W, -12VDC 0.3 TO 18 GHz SPST REFLECTIVE PIN-DIODE SWITCH		
ISSUED			SIZE	FSCM NO.	DWG NO.
			A	60483	100-6986-4
			SCALE	N:S	SHEET
					2 OF 4

**DESCRIPTION**

AMC MODEL SWN-2184-1A OPTIONS 0318, 45-068 , HPR7W, -12VDC IS A SPST REFLECTIVE PIN-DIODE SWITCH/MODULATOR OPTIMIZED FOR A FREQUENCY RANGE OF 0.3 TO 18 GHZ WITH THE HIGH POWER OPTION.

**FUNCTIONAL BLOCK DIAGRAM**



**CONFIDENTIAL AND PROPRIETARY**

**AMERICAN MICROWAVE CORPORATION**

7311-G GROVE ROAD  
 FREDERICK, MARYLAND 21704 USA  
 TEL: 301-662-4700 FAX: 301-662-4938  
 WEBSITE: [www.americanmicrowavecorp.com](http://www.americanmicrowavecorp.com)  
 E-MAIL: [sales@americanmicrowavecorp.com](mailto:sales@americanmicrowavecorp.com)  
 ISO 9001:2000 CERTIFIED



APPROVALS		DATE	TITLE			
DRAWN		08/08/06	PRODUCT FEATURE			
REDRAWN		09/12/06	SWN-2184-1A			
ISSUED			OPTION: 0318, 45-068, HPR7W, -12VDC			
			0.3 TO 18 GHZ SPST REFLECTIVE PIN-DIODE SWITCH			
			SIZE	FSCM NO.	DWG NO.	REV.
			A	60483	100-6986-4	A
			SCALE N:S		SHEET 3 OF 4	